

---

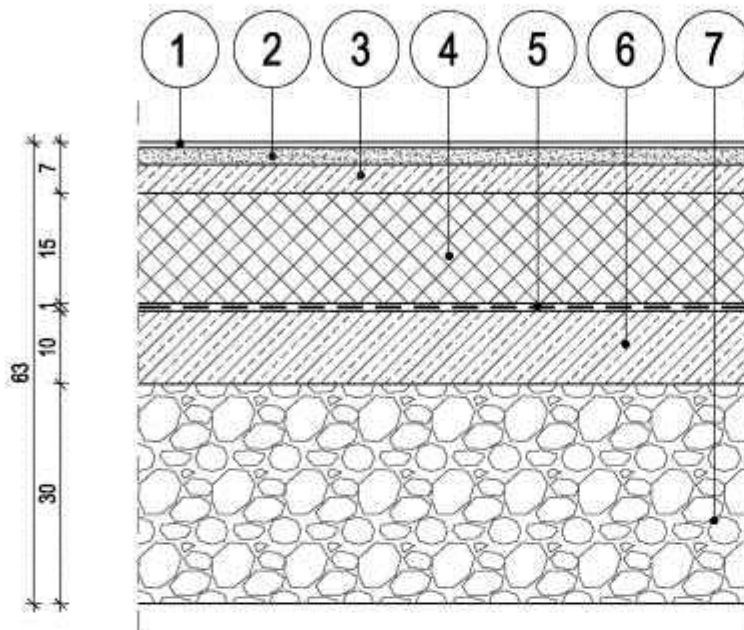
**DETALJI PODOVA I ZIDOVA R 1:10**

---

ATLETSKA DVORANA, kasarna "General Jovan Mišković", Beograd

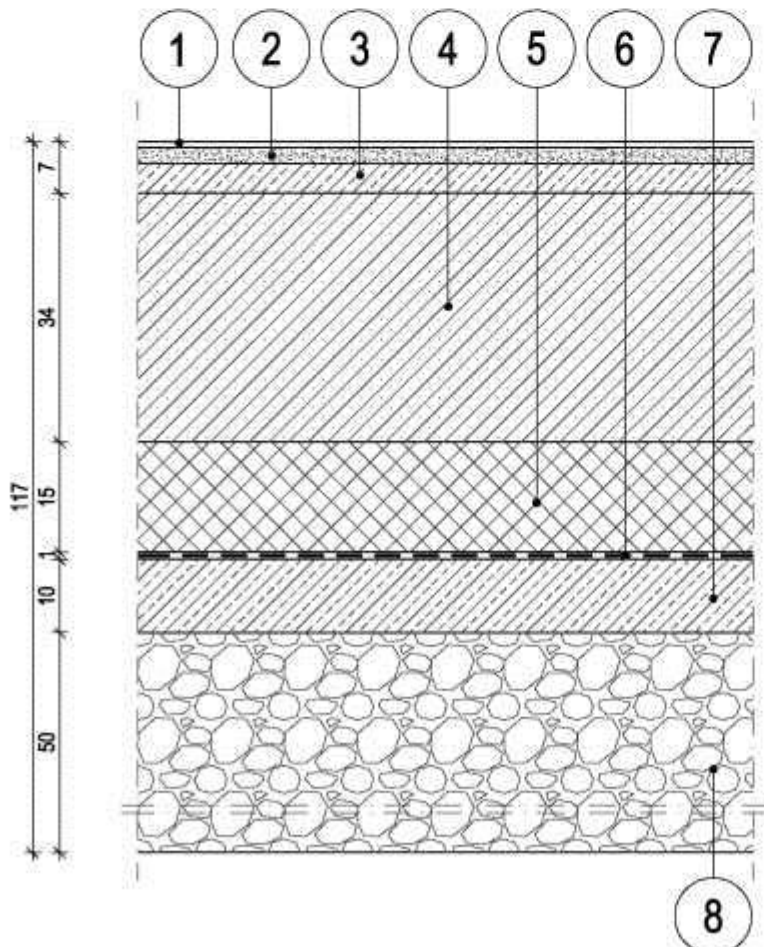
## PODOVI NA TLU

### P1 - PROTIVKLIZNE KERAMIČKE PLOČICE



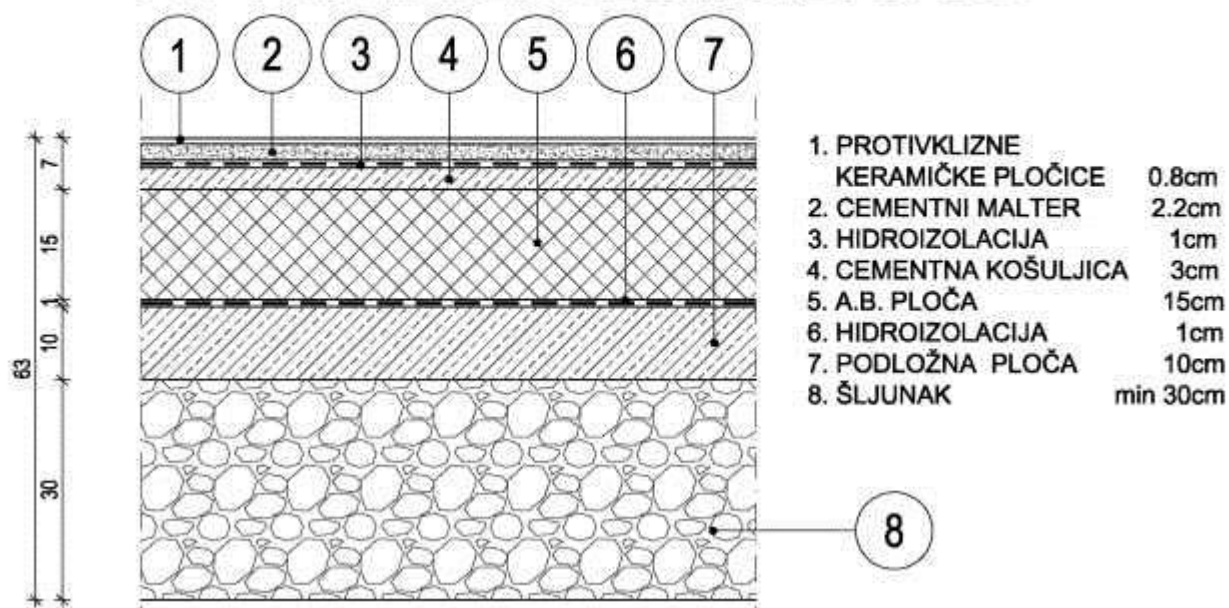
- |                                      |          |
|--------------------------------------|----------|
| 1. PROTIVKLIZNE<br>KERAMIČKE PLOČICE | 0.8cm    |
| 2. CEMENTNI MALTER                   | 2.2cm    |
| 3. CEMENTNA KOŠULJICA                | 4cm      |
| 4. A.B. PLOČA                        | 15cm     |
| 5. HIDROIZOLACIJA                    | 1cm      |
| 6. PODLOŽNA PLOČA                    | 10cm     |
| 7. ŠLJUNAK                           | min 30cm |

### P1\* - PROTIVKLIZNE KERAMIČKE PLOČICE

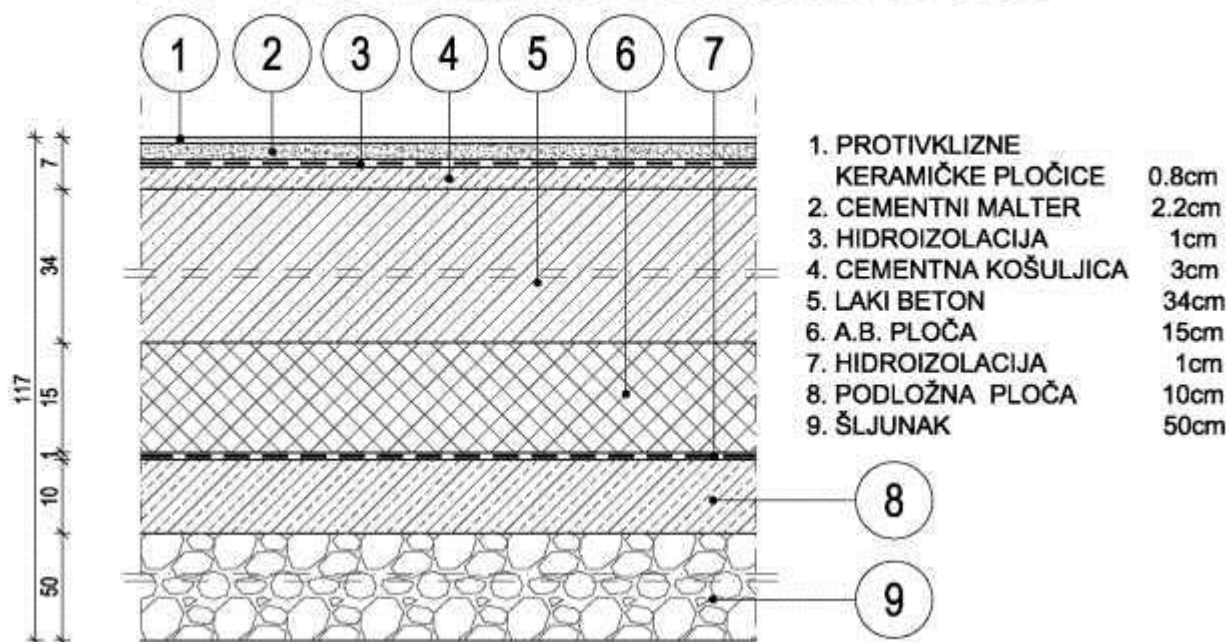


- |                                      |       |
|--------------------------------------|-------|
| 1. PROTIVKLIZNE<br>KERAMIČKE PLOČICE | 0.8cm |
| 2. CEMENTNI MALTER                   | 2.2cm |
| 3. CEMENTNA KOŠULJICA                | 4cm   |
| 4. LAKI BETON                        | 34cm  |
| 5. A.B. PLOČA                        | 15cm  |
| 6. HIDROIZOLACIJA                    | 1cm   |
| 7. PODLOŽNA PLOČA                    | 10cm  |
| 8. ŠLJUNAK                           | 50cm  |

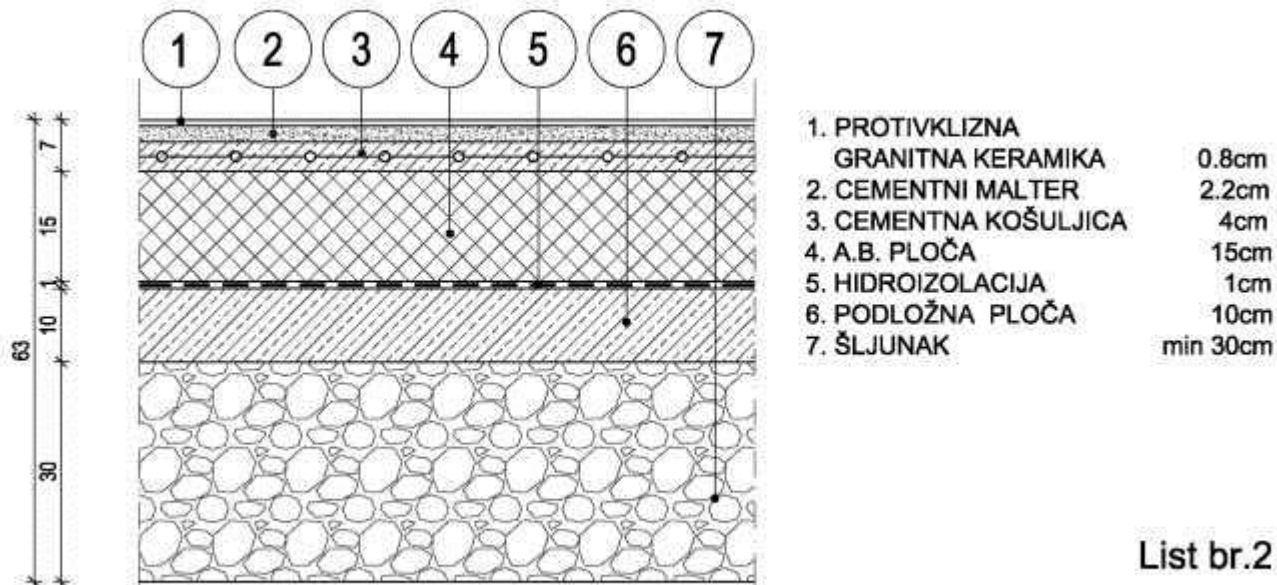
### P1a - PROTIVKLIZNE KERAMIČKE PLOČICE



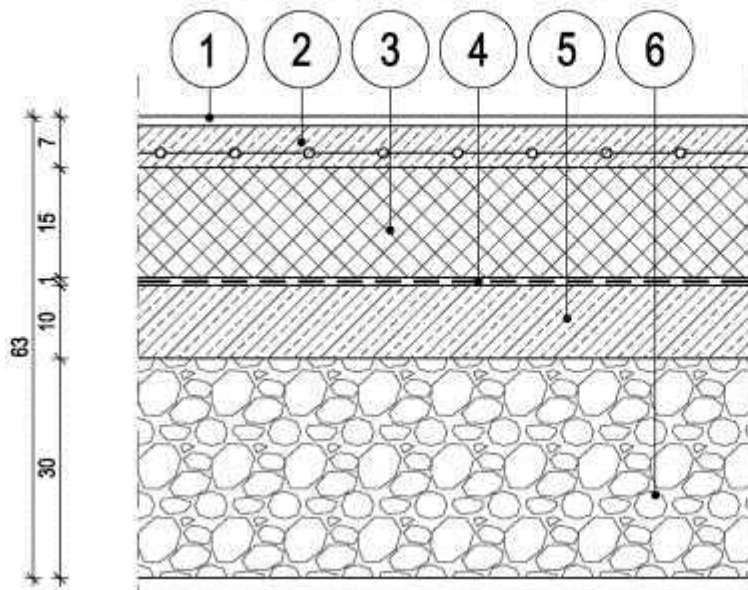
### P1a\* - PROTIVKLIZNE KERAMIČKE PLOČICE



### P2 - PROTIVKLIZNA GRANITNA KERAMIKA

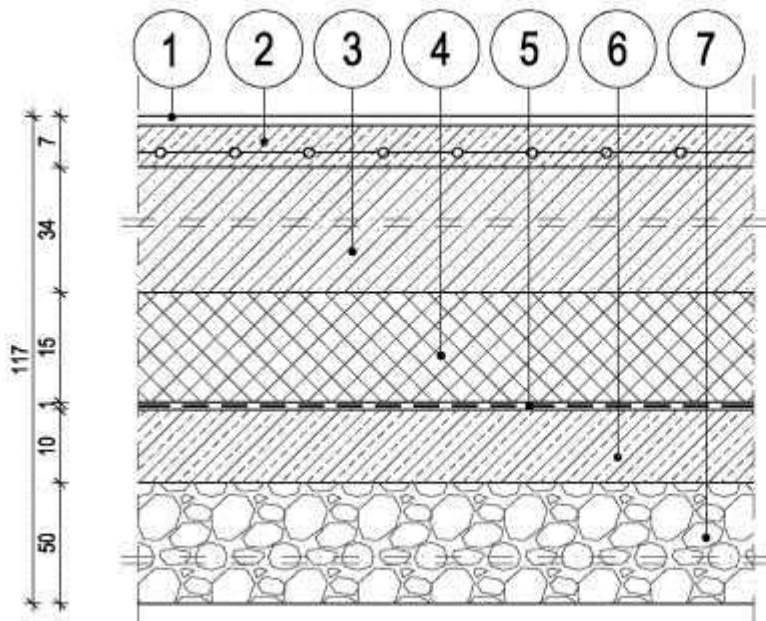


### P3 - SINTETIČKI SPORTSKI POD



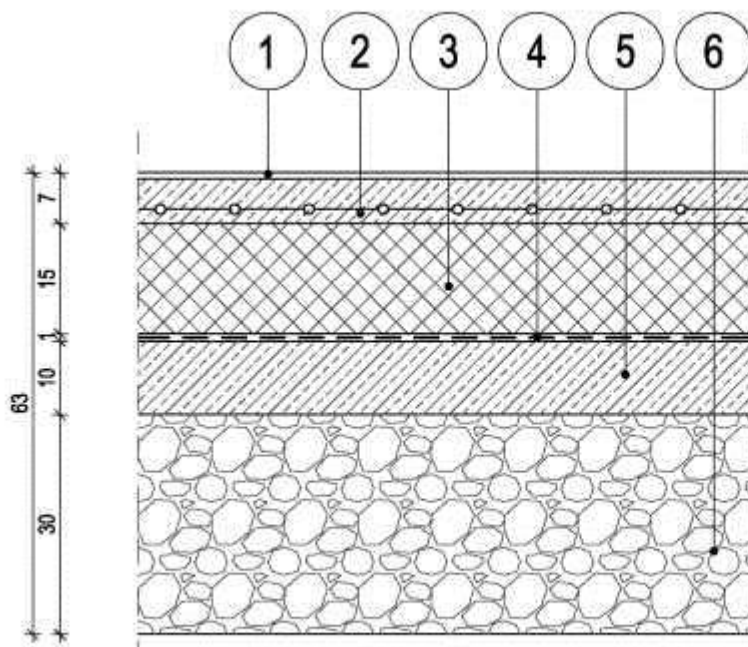
- |  |          |
|--|----------|
| 1. SINTETIČKI SPORTSKI POD             | 1.3cm    |
| 2. LAKO ARMIRANA<br>CEMENTNA KOŠULJICA | 5.7cm    |
| 3. A.B. PLOČA                          | 15cm     |
| 4. HIDROIZOLACIJA                      | 1cm      |
| 5. PODLOŽNA PLOČA                      | 10cm     |
| 6. ŠLJUNAK                             | min 30cm |

### P3\* - SINTETIČKI SPORTSKI POD



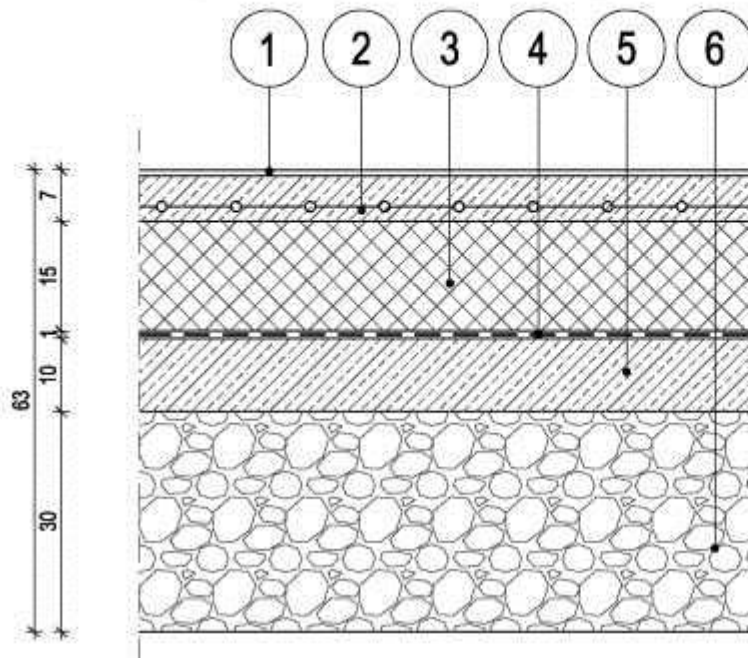
- |  |       |
|--|-------|
| 1. SINTETIČKI SPORTSKI PO              | 1.3cm |
| 2. LAKO ARMIRANA<br>CEMENTNA KOŠULJICA | 5.7cm |
| 3. LAKI BETON                          | 34cm  |
| 4. A.B. PLOČA                          | 15cm  |
| 5. HIDROIZOLACIJA                      | 1cm   |
| 6. PODLOŽNA PLOČA                      | 10cm  |
| 7. ŠLJUNAK                             | 50cm  |

### P4 - LINOLEUM



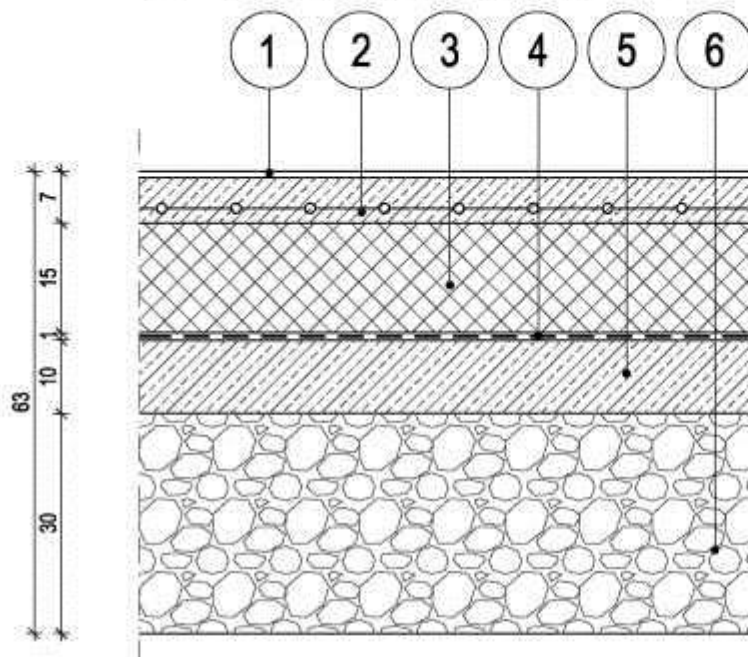
- |  |          |
|--|----------|
| 1. LINOLEUM                            | 0.2cm    |
| 2. LAKO ARMIRANA<br>CEMENTNA KOŠULJICA | 6.8cm    |
| 3. A.B. PLOČA                          | 15cm     |
| 4. HIDROIZOLACIJA                      | 1cm      |
| 5. PODLOŽNA PLOČA                      | 10cm     |
| 6. ŠLJUNAK                             | min 30cm |

### P4a - LINOLEUM ANTISTATIK



- |  |       |
|--|-------|
| 1. LINOLEUM ANTISTATIK                 | 0.4cm |
| 2. LAKO ARMIRANA<br>CEMENTNA KOŠULJICA | 6.6cm |
| 3. A.B. PLOČA                          | 15cm  |
| 4. HIDROIZOLACIJA                      | 1cm   |
| 5. PODLOŽNA PLOČA                      | 10cm  |
| 6. ŠLJUNAK                             | 30cm  |

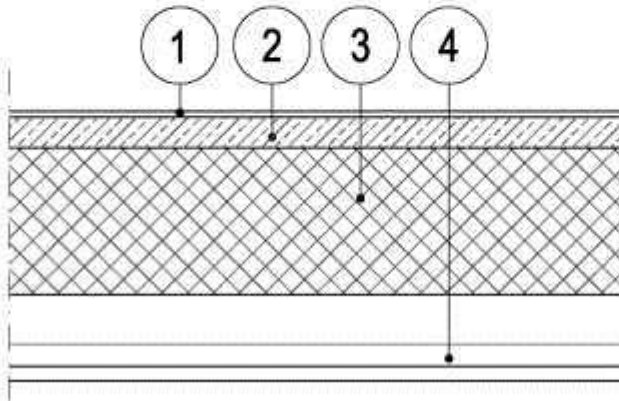
### P5 - EPOKSIDNI PREMAZ



- |  |          |
|--|----------|
| 1. EPOKSIDNI PREMAZ                    | 0.2cm    |
| 2. LAKO ARMIRANA<br>CEMENTNA KOŠULJICA | 6.8cm    |
| 3. A.B. PLOČA                          | 15cm     |
| 4. HIDROIZOLACIJA                      | 1cm      |
| 5. PODLOŽNA PLOČA                      | 10cm     |
| 6. ŠLJUNAK                             | min 30cm |

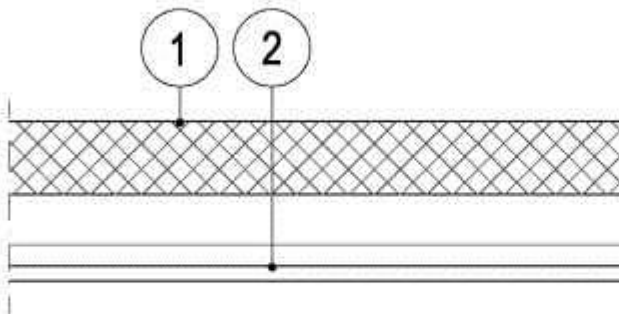
## MEĐUSPRATNE TAVANICE

### P6 - GRANITNA KERAMIKA /stepenište publika/



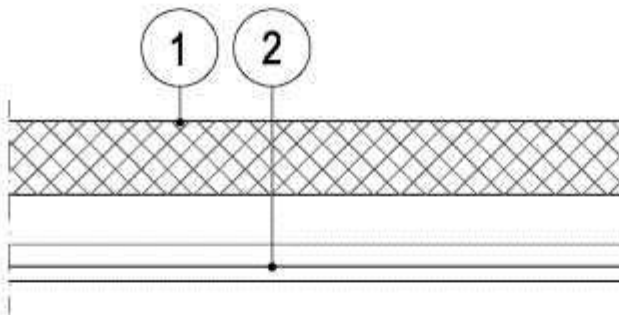
- |   |       |
|---|-------|
| 1. GRANITNA KERAMIKA                      | 0.8cm |
| 2. CEMENTNA KOŠULJICA                     | 4.2cm |
| 3. A.B. PLOČA /STEPENIŠTE                 | 20cm  |
| 4. SPUŠTENI PLAFON<br>ALUMINIJUM TRAKASTI |       |

### P7 - BETONSKA KORUBA /gledalište/



- |   |      |
|---|------|
| 1. BETONSKA KORUBA                        | 10cm |
| 2. SPUŠTENI PLAFON<br>ALUMINIJUM TRAKASTI |      |

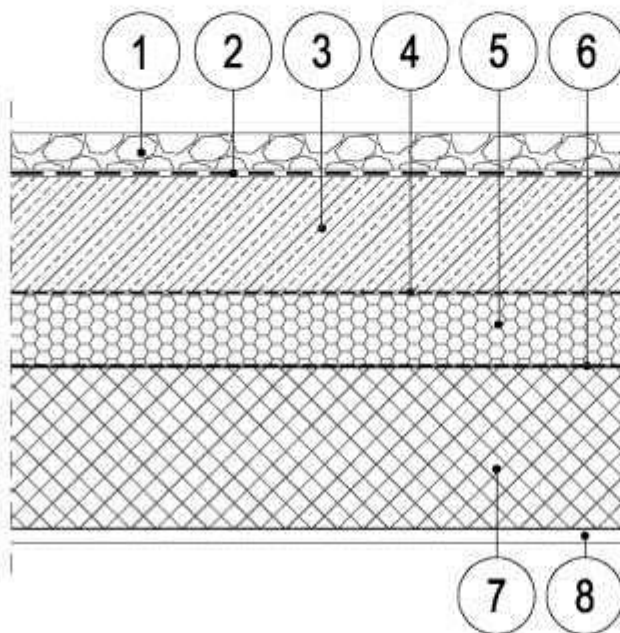
### P8 - BETONSKA PLOČA /gledalište/



- |   |         |
|---|---------|
| 1. A.B. PLOČA                             | 15/20cm |
| 2. SPUŠTENI PLAFON<br>ALUMINIJUM TRAKASTI |         |

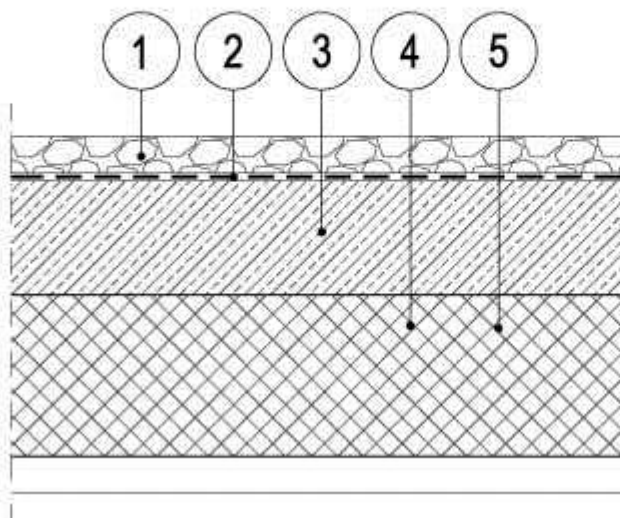
## KROVOVI

### K1 - RAVAN NEPROHODAN KROV



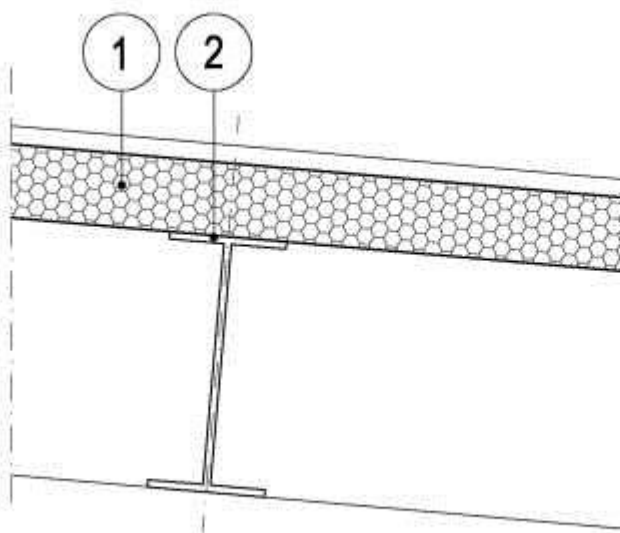
- |                     |              |
|---------------------|--------------|
| 1. ZAŠTITA ŠLJUNKOM | 5cm          |
| 2. HIDROIZOLACIJA   | 1cm          |
| 3. SLOJ ZA PAD      | od 4 do 18cm |
| 4. PE FOLIJA        |              |
| 5. TERMOIZOLACIJA   | 10cm         |
| 6. PARNA BRANA      |              |
| 7. A.B. PLOČA       | 15,20,22cm   |
| 8. PRODUŽNI MALTER  | 2cm          |

### K2 - NADSTREŠNICA



- |                     |              |
|---------------------|--------------|
| 1. ZAŠTITA ŠLJUNKOM | 5cm          |
| 2. HIDROIZOLACIJA   | 1cm          |
| 3. SLOJ ZA PAD      | od 4 do 18cm |
| 4. A.B. PLOČA       | 15(20)cm     |
| 5. PRODUŽNI MALTER  | 5cm          |

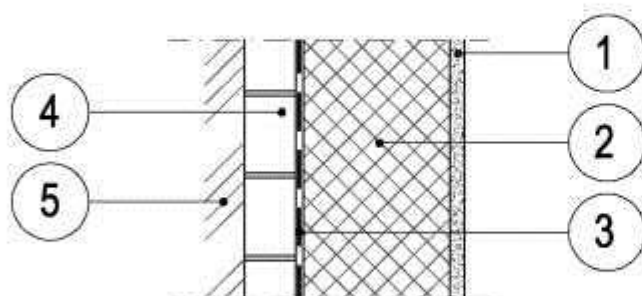
### K3 - KOS KROV



- |                               |      |
|-------------------------------|------|
| 1. VATROOTPORNI KROVNI PANEL  | 12cm |
| 2. ČELIČNA KONSTRUKCIJA KROVA |      |

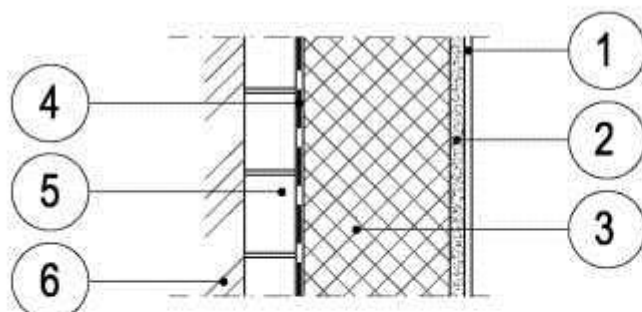
## ZIDOVI

### UKZ1- UKOPANI ZID /podtribinski deo/



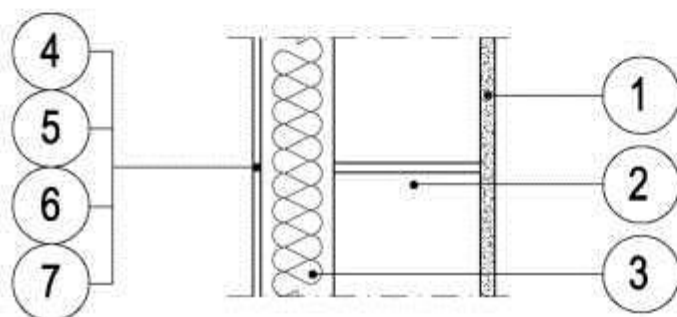
1. PRODUŽNI MALTER	2cm
2. A.B. ZID	20cm
3. HIDROIZOLACIJA	1cm
4. OPEKA	7cm
5. ZEMLJA	

### UKZ2- UKOPANI ZID /podtribinski deo/



1. KERAMIČKE PLOČICE	0.8cm
2. PRODUŽNI MALTER	2cm
3. A.B. ZID	20cm
4. HIDROIZOLACIJA	1cm
5. OPEKA	7cm
6. ZEMLJA	

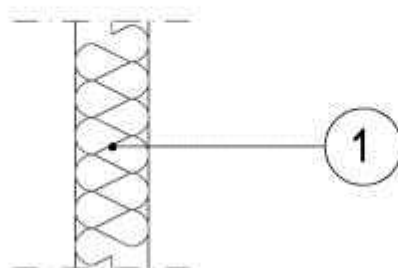
### SFZ1- FASADNI ZID



1. PRODUŽNI MALTER	2cm
2. OPEKARSKI BLOK	20cm
3. MINERALNA VUNA	10cm
4. RABIC MREŽA	
5. GLET MASA	
6. PODLOGA ZA FASADNI MALTER	
7. AKRILNI FASADNI MALTER	

1cm

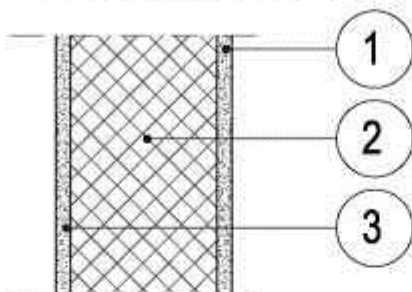
### SFZ2- FASADNI ZID



1. FASADNI SENDVIČ PANEL	10cm
--------------------------	------

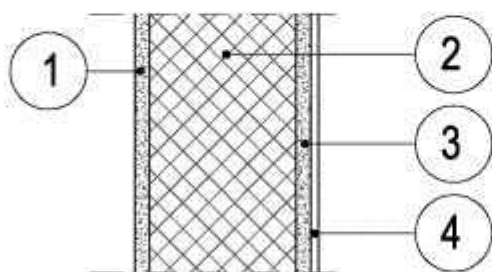


### UZ1- UNUTRAŠNJI ZID



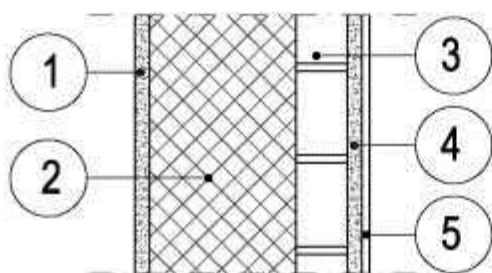
- 1. PRODUŽNI MALTER 2cm
- 2. A.B. ZID 20cm
- 3. PRODUŽNI MALTER 2cm

### UZ1a- UNUTRAŠNJI ZID



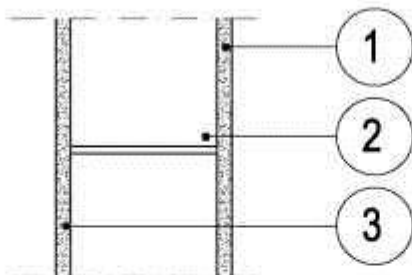
- 1. PRODUŽNI MALTER 2cm
- 2. A.B. ZID 20cm
- 3. PRODUŽNI MALTER 2cm
- 4. KERAMIČKE PLOČICE 0.8cm

### UZ1b- UNUTRAŠNJI ZID



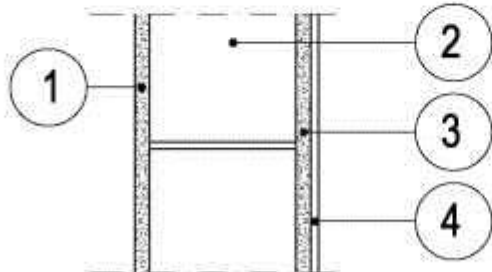
- 1. PRODUŽNI MALTER 2cm
- 2. A.B. ZID 20cm
- 3. PUNA OPEKA 7cm
- 4. PRODUŽNI MALTER 2cm
- 5. KERAMIČKE PLOČICE 0.8cm

### UZ2- UNUTRAŠNJI ZID



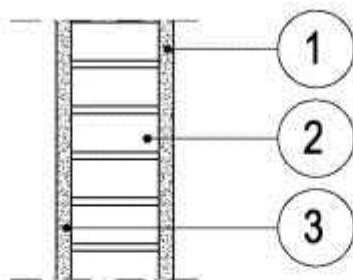
- 1. PRODUŽNI MALTER 2cm
- 2. OPEKARSKI BLOK 20cm
- 3. PRODUŽNI MALTER 2cm

### UZ2a- UNUTRAŠNJI ZID



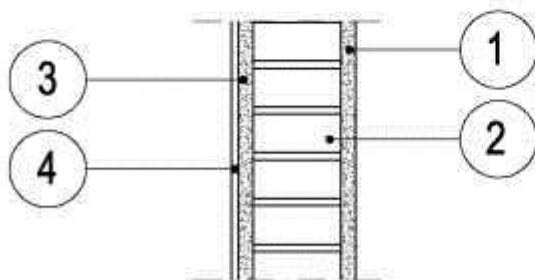
- 1. PRODUŽNI MALTER 2cm
- 2. OPEKARSKI BLOK 20cm
- 3. PRODUŽNI MALTER 2cm
- 4. KERAMIČKE PLOČICE 0.8cm

### UZ3- UNUTRAŠNJI ZID



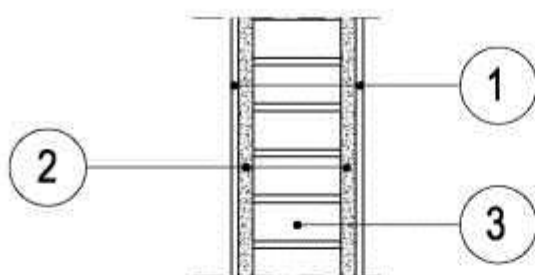
- 1. PRODUŽNI MALTER 2cm
- 2. PUNA OPEKA 12cm
- 3. PRODUŽNI MALTER 2cm

### UZ3a- UNUTRAŠNJI ZID



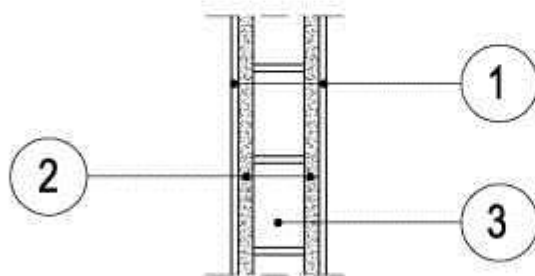
- 1. PRODUŽNI MALTER 2cm
- 2. PUNA OPEKA 12cm
- 3. PRODUŽNI MALTER 2cm
- 4. KERAMIČKE PLOČICE 0.8cm

### UZ3b- UNUTRAŠNJI ZID



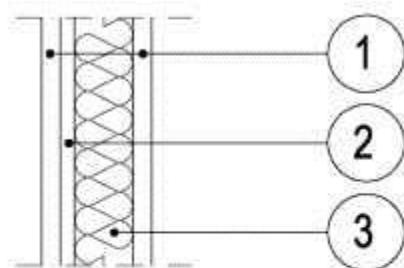
- 1. KERAMIČKE PLOČICE 0.8cm
- 2. PRODUŽNI MALTER 2cm
- 3. PUNA OPEKA 12cm

### UZ4- UNUTRAŠNJI ZID



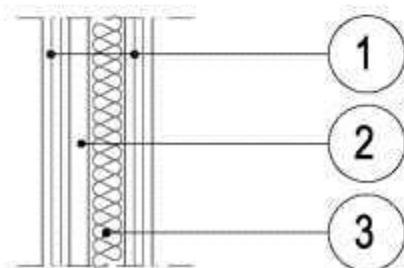
- 1. KERAMIČKE PLOČICE 0.8cm
- 2. PRODUŽNI MALTER 2cm
- 3. PUNA OPEKA 7cm

## UZ5- UNUTRAŠNJI ZID /vatrootporan 90min/



1. VATROOTPORNNA GIPS-KARTON PLOČA 2.5cm
2. VAZDUŠNI PROSTOR 2cm
3. MINERALNA VUNA 8cm

## UZ6- UNUTRAŠNJI ZID /vatrootporan 120min/



1. VATROOTPORNNA GIPS-KARTON PLOČA 3x1.25cm
2. VAZDUŠNI PROSTOR 3.5cm
3. MINERALNA VUNA 5cm